

- What if... We had Innovative / Unconventional Gathering Places?

Located throughout the corridor- not just West End.

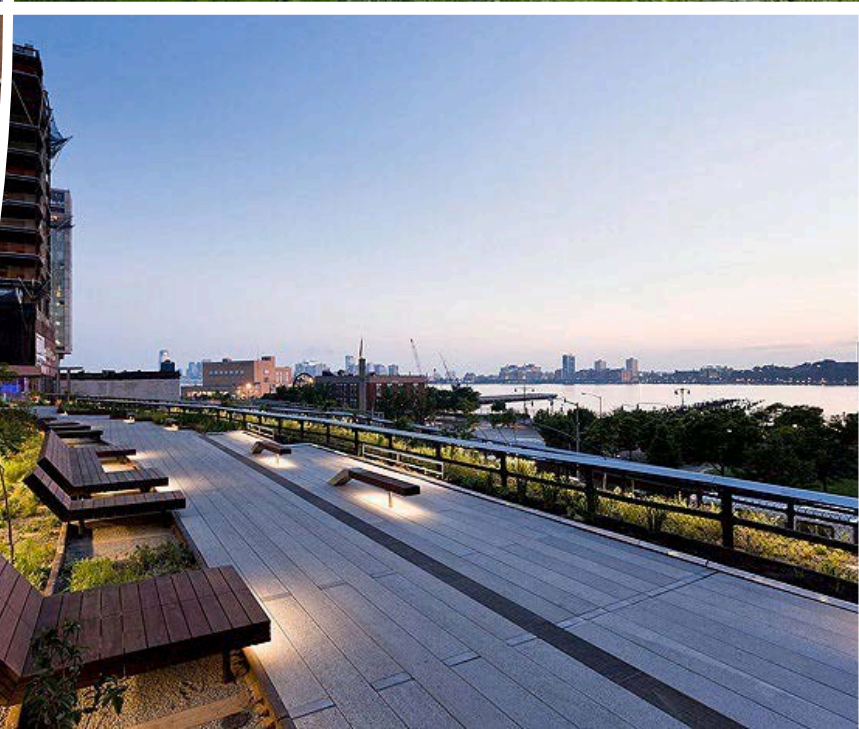
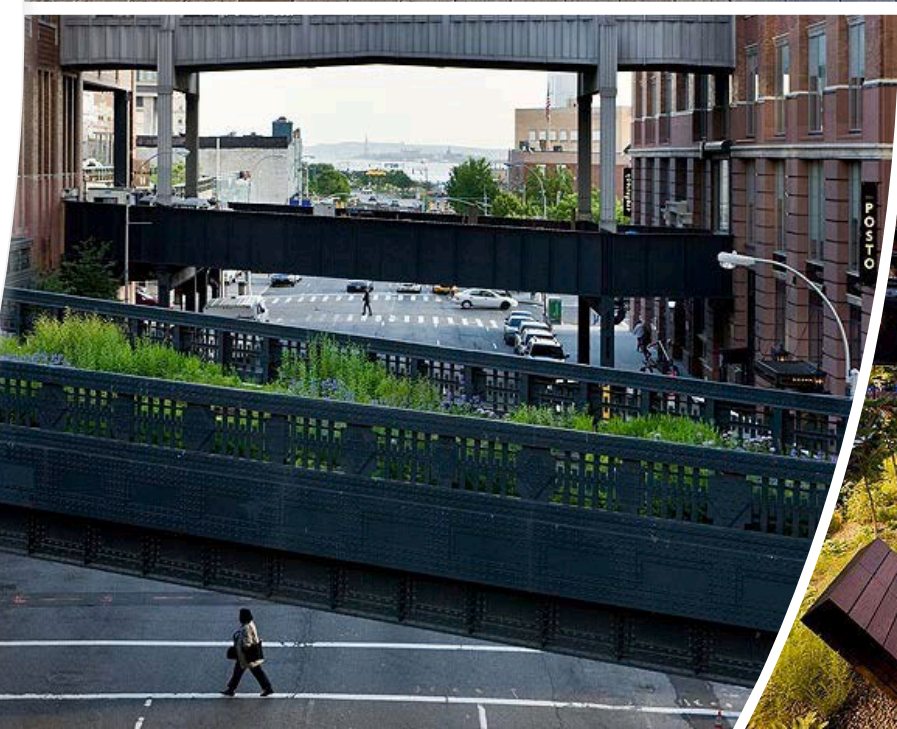


- Creating visual interest through unconventional or sustainable materials. A reason to visit W. Colfax that doesn't exist elsewhere in the city.
- Indoor/Outdoor Venue and Breakout Spaces.
- Begins to create those nodes throughout the corridor as well as interesting spaces to house some of the W. Colfax history, imagery, art –a nod to the past.
- I selected this image to convey that it doesn't need to be high-end materials or an expensive building process... in-fact, that doesn't really suit our culture. The idea that the aesthetic isn't agreed upon (some will love it, some will hate it) is embraced.
- I believe this should be an important driver throughout the development of the corridor. Let's make this an ongoing, community conversation through design & architecture.

• What if... We Created an Elevated Pedestrian Experience?

Located throughout the corridor- not just West End.

- Using a change in elevation to emulate the change in topography along W. Colfax as well as in Colorado at large. While creating a ribbon of nature & beauty even while we're spending time in some of our more urban locations.
- Developing special moments in various areas of the corridor to enjoy our surroundings. Celebrating Colorado's natural grasses, flowers, and other vegetation, our local artist, architecture, geography and gorgeous weather.
- I selected this image to convey that W. Colfax, like many areas from Chelsea to Hudson Yards, are less than optimal in their aesthetic, but the walkway creates connection and continuity.
- Through studying the Highline Development in NYC, notice the visual distraction from the less attractive elements, the creation of viewing points for those buildings and areas of geographic interest, and a subtle but necessary buffer between the pedestrian and street traffic experience.



• What if... We Created a Sky Garden at Our Highest Point?

Located at The West End.

- Optimizing all of our best parts!! A new tall structure, with a sky garden on the top floor, a high-end dinner club or bar, with panoramic views of Denver's Twinkling Lights as well as The Flat Irons and Mountains.
- A perimeter surrounding outdoor terrace & dining experience
- I selected this image to convey that W. Colfax, like many areas from Chelsea to Hudson Yards, are less than optimal in their aesthetic, but the walkway creates connection and continuity.
- This is the "Walkie –Talkie" Building in London. A similar concept creates the ultimate W. Colfax Destination. If Casa Benita has a following... what if we could pull this off? Views for days!

